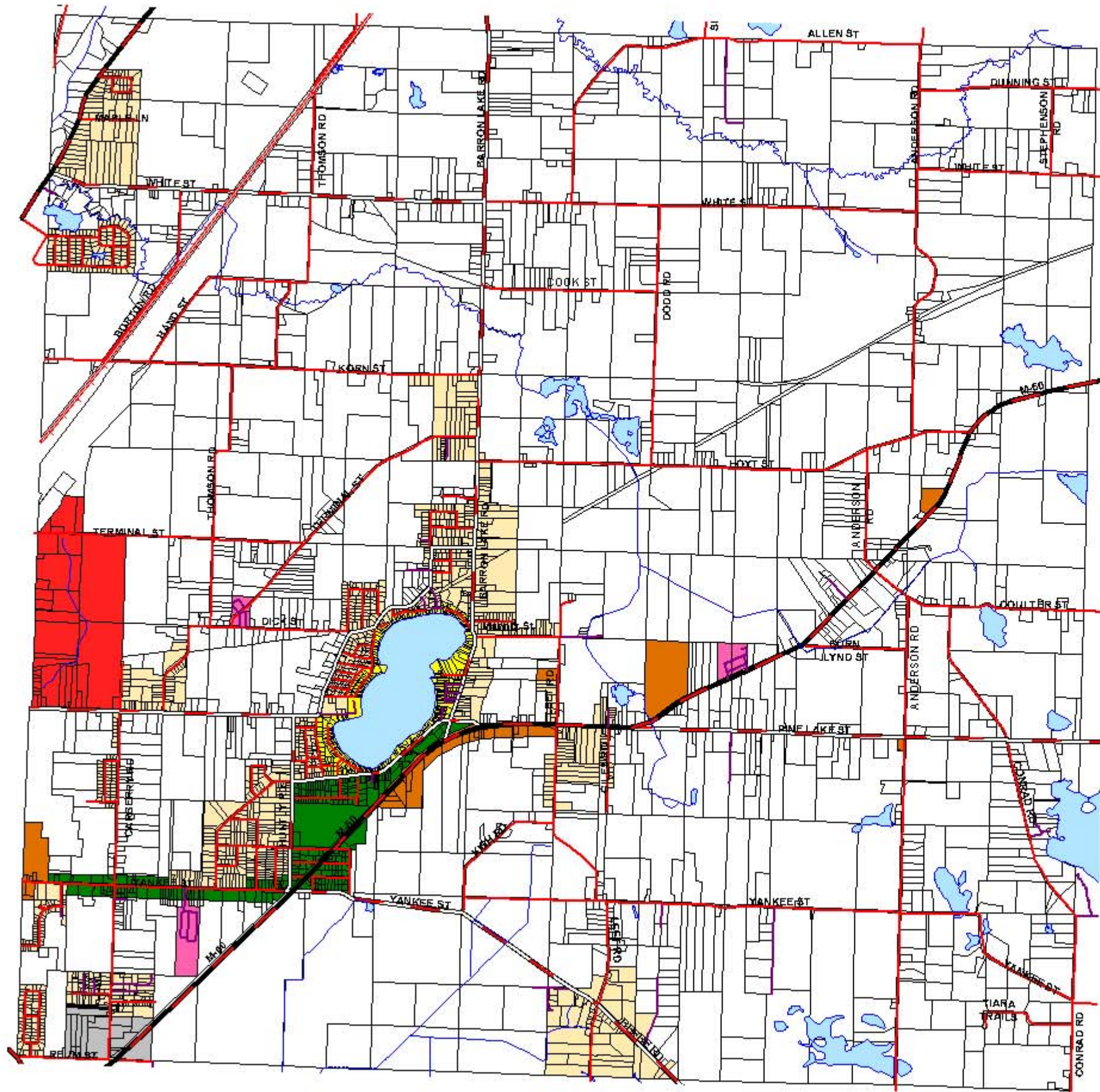


# HOWARD TOWNSHIP

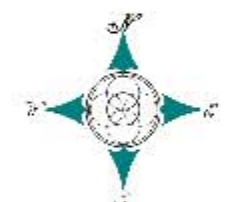
## ZONING MAP



**Zoning Legend**

- Agricultural Residential District
- General Commercial District
- Lake Residential District
- Light Industrial District
- Low Density Residential District
- Manufactured Housing Park District
- Manufacturing District
- Mixed Use District

Information contained herein is provided for reference purposes only and should be confirmed with the appropriate local agency. Cass County assumes no responsibility for errors and/or omissions.



Scale: 1 inch equals 3,300 feet

**Road/Rail Legend**

- U.S. Highways
- State Highways
- County Primary Roads
- County Local Roads
- City/Village Major Roads
- City/Village Local Roads
- Not Defined
- Railroads

Copyright 2000 Cass County, Michigan.  
All Rights Reserved.

**Cass County**  
**Information Systems**  
Kerry Collins, Director  
(269) 445-4432